



# **Back Office Integration Travel Agent Commissions Specification 2011B**

**Version 1.0**

**21 October 2011**

## About HTNG

Hotel Technology Next Generation (HTNG) is a non-profit association with a mission to foster, through collaboration and partnership, the development of next-generation systems and solutions that will enable hoteliers and their technology vendors to do business globally in the 21st century; to be recognized as a leading voice of the global hotel community, articulating the technology requirements of hotel companies of all sizes to the vendor community; and to facilitate the development of technology models for hospitality that will foster innovation, improve the guest experience, increase the effectiveness and efficiency of hotels, and create a healthy ecosystem of technology suppliers.

Copyright 2011, Hotel Technology Next Generation

All rights reserved.

No part of this publication may be reproduced, stored in a retrieval system, or transmitted, in any form or by any means, electronic, mechanical, photocopying, recording, or otherwise, without the prior permission of the copyright owner.

For any software code contained within this specification, permission is hereby granted, free-of-charge, to any person obtaining a copy of this specification (the "Software"), to deal in the Software without restriction, including without limitation the rights to use, copy, modify, merge, publish, distribute, sublicense, and/or sell copies of the Software, and to permit persons to whom the Software is furnished to do so, subject to the above copyright notice and this permission notice being included in all copies or substantial portions of the Software.

Manufacturers and software providers shall not claim compliance with portions of the requirements of any HTNG specification or standard, and shall not use the HTNG name or the name of the specification or standard in any statements about their respective product(s) unless the product(s) is (are) certified as compliant to the specification or standard.

THE SOFTWARE IS PROVIDED "AS IS", WITHOUT WARRANTY OF ANY KIND, EXPRESS OR IMPLIED, INCLUDING BUT NOT LIMITED TO THE WARRANTIES OF MERCHANTABILITY, FITNESS FOR A PARTICULAR PURPOSE, AND NON-INFRINGEMENT. IN NO EVENT SHALL THE AUTHORS OR COPYRIGHT HOLDERS BE LIABLE FOR ANY CLAIM, DAMAGES, OR OTHER LIABILITY, WHETHER IN AN ACTION OF CONTRACT, TORT OR OTHERWISE, ARISING FROM, OUT OF, OR IN CONNECTION WITH THE SOFTWARE OR THE USE OR OTHER DEALINGS IN THE SOFTWARE.

Permission is granted for implementers to use the names, labels, etc. contained within the specification. The intent of publication of the specification is to encourage implementations of the specification.

This specification has not been verified for avoidance of possible third-party proprietary rights. In implementing this specification, usual procedures to ensure the respect of possible third-party intellectual property rights should be followed.

The names Hotel Technology Next Generation and HTNG, and logos depicting these names, are trademarks of Hotel Technology Next Generation. Permission is granted for implementers to use the aforementioned names in technical documentation for the purpose of acknowledging the copyright and including the notice required above. All other use of the aforementioned names and logos requires the permission of Hotel Technology Next Generation, either in written form or as explicitly permitted for the organization's members through the current terms and conditions of membership.

# Table of contents

<b>1</b>	<b>THIS SPECIFICATION AT A GLANCE .....</b>	<b>4</b>
<b>2</b>	<b>DOCUMENT INFORMATION.....</b>	<b>5</b>
2.1	DOCUMENT HISTORY.....	5
2.2	DOCUMENT PURPOSE .....	5
2.3	SCOPE.....	5
2.4	RELATIONSHIP TO OTHER STANDARDS.....	5
2.5	AUDIENCE .....	5
2.6	OVERVIEW.....	5
2.7	KNOWN LIMITATIONS.....	6
<b>3</b>	<b>SCENARIOS.....</b>	<b>7</b>
3.1	TRAVEL AGENT COMMISSIONS.....	7
3.1.1	<i>Overview</i> .....	7
3.1.2	<i>Diagram</i> .....	7
3.1.3	<i>Roles</i> .....	7
3.1.4	<i>Use Case</i> .....	7
3.1.5	<i>Data Element Table – Request</i> .....	8
3.1.6	<i>Sample Message - Request</i> .....	20
3.1.7	<i>Data Element Table – Response</i> .....	22
3.1.8	<i>Sample Message - Response</i> .....	23
<b>4</b>	<b>APPENDICES .....</b>	<b>24</b>
4.1	GLOSSARY OF TERMS .....	24
4.2	IMPLEMENTATION NOTES .....	24
4.3	LINKS .....	24
4.4	REFERENCED DOCUMENTS .....	24

## 1 This Specification at a Glance

This Back Office Integration Specification covers the Travel Agent Commission payment.

Agents who transact reservations via an electronic booking system are entitled to a commission for customer bookings that meet the necessary qualifying conditions (e.g. qualifying rate for travel). Commissions are only realized when the guest actually utilizes the reservation and has a valid stay at a hotel. Using the International Air Transport Association (IATA) number to identify the travel agent, a Travel Agent commission record is generated from the Commission Calculation Server post check-out of the guest.

The Commission Calculation Server is the Reservation System that calculates the commission payment amount and currency based on the information provided on the guest reservation record. Typically, travel agent commission payments will be a percentage of room revenue or a flat amount per room night/stay for a guest stay.

This specification addresses transmission of the commission amount, and supporting details, from the Commission Calculation Server to a Commission Payment Server (Processing or Back Office).

## 2 Document Information

### 2.1 Document History

Version	Date	Author	Comments
0.02	08 Aug 2011	Bill Euler	Composed Document Information
0.03	17 Aug 2011	Jay Rosamilia	Added populated data element tables and sample messages.
0.04	18 Aug 2011	Alex Lee, Back Office WG	Drafted travel agent commissions scenario
0.05	22 Aug 2011	Jay Rosamilia	Updated diagram, minor edits
0.90	23 Sep 2011	Kylene Reese	Member review and vote periods
1.0	21 Oct 2011	Back Office WG	Travel Agent Commissions Specification

### 2.2 Document Purpose

This document provides details on a new message that simplifies the process of paying travel agent commissions.

### 2.3 Scope

The Travel Agent Commission standard is used to initiate a commission to be paid, and notification to third party processing or back office applications.

### 2.4 Relationship to Other Standards

This document has no other direct relationship with any existing HTNG standard, but does relate and expand upon the Open Travel HotelCommNotifRQ.xsd – Commission Event Update Request (<http://www.opentravel.org>).

### 2.5 Audience

The intended audiences of this document are development teams and system designers seeking to implement these standardized interface specifications within their products. This document also provides business process flows that may be used by hotel groups looking to standardize their interfaces within their hotel architectures.

### 2.6 Overview

Agents who transact reservations via an electronic booking system are entitled to a commission for customer bookings that meet the necessary qualifying conditions (e.g. qualifying rate for travel). Commissions are only realized when the guest actually utilizes the reservation and has a valid stay at a hotel. Using the IATA number to identify the travel agent, a Travel Agent commission record is generated from the Commission Calculation Server post check-out of the guest.

The Commission Calculation Server is the Reservation System that calculates the commission payment amount and currency based on the information provided on the guest reservation record. Typically, travel agent commission payments will be a percentage of room revenue or a flat amount per room night/stay for a guest stay.

This specification addresses transmission of the commission amount, and supporting details, from the Commission Calculation Server to a Commission Payment Server (Processing or Back Office).

## 2.7 Known Limitations

This only covers the commission amount to be paid, but does not address the commission calculation.

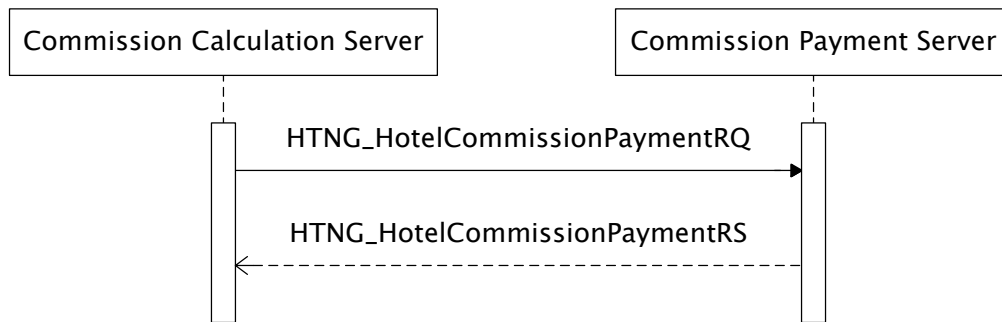
### 3 Scenarios

#### 3.1 Travel Agent Commissions

##### 3.1.1 Overview

The Travel Agent Commissions message is transmitted from one system to another for the purpose of notifying of the commissions payable to the booking agent, including the backing historical reservation information.

##### 3.1.2 Diagram



##### 3.1.3 Roles

**Commission Calculation Server** – a system that transacts the guest check-in/check-out and calculates payment amount due to the travel agent.

**Commission Payment Server** – typically a back office financial management system or other payment processor that would ultimately execute the payable and is responsible for processing the message and handling of payment to the travel agent.

##### 3.1.4 Use Case

Basic Course of Events:	The Commission Calculation Server calculates travel agent commission and transmits message to commission payment server.
Exception Path:	None
Alternative Paths:	None
Trigger:	An eligible commission has been calculated and approved for payment.
Assumptions:	1) The Travel Agent must have valid identification credentials. 2) There is a process in place within the reservation system that will approve travel agent commissions to be paid.
Preconditions:	1) An eligible hotel reservation has completed its stay. 2) The Commission Calculation Server is responsible for the calculation of the commission payment amount and currency. 3) The Commission Calculation Server provides the back-up information used in the calculation of travel agent commission amount (e.g. room rate plan, rate amount, and percentage/amount to calculate

	travel agent commission amount).
Postconditions:	<p>1) The Commission Payment Server will fulfill the commission payment obligation.</p> <p>2) The Commission Payment Server will have reporting for the purposes of reconciling the travel agent commission payments to be/have been paid.</p>

### 3.1.5 Data Element Table - Request

Element   @Attribute	Num	Description/Contents
HTNG_HotelCommissionPaymentRQ	1	Root element of the request message.
@EchoToken	1	A reference for additional message identification, assigned by the requesting host system. When a request message includes an echo token, the corresponding response message MUST include an echo token with an identical value.
@CorrelationID	0..1	Allow end-to-end correlation of log messages with the corresponding Web service message throughout the processing of the Web service message.
@TimeStamp	1	Indicates the creation date and time of the message in UTC using the following format specified by ISO 8601; YYYY-MM-DDThh:mm:ssZ with time values using the 24-hour clock (e.g., 20 November 2003, 1:59:38 pm UTC becomes 2003-11-20T13:59:38Z).
@Version	1	For all OpenTravel versioned messages, the version of the message is indicated by a decimal value.
@Target	0..1	Used to indicate whether the request is for the Test or Production system.
HTNG_HotelCommissionPaymentRQ \ CommissionRecipients	1	A collection of CommissionRecipient entities.
HTNG_HotelCommissionPaymentRQ \ CommissionRecipients \ CommissionRecipient	1..n	A individual CommissionRecipient for which a commission has been calculated and needs to be paid.
HTNG_HotelCommissionPaymentRQ \ CommissionRecipients \ CommissionRecipient \ UniqueID	1..n	This is used to pass a Unique ID linked to the profile that is being transferred. For a guest profile, it could be the customer loyalty number, for a company it could be the corporate ID. For a travel Agency it could be the IATA number.
@Type	1	The Type attribute refers to OTA code type UIT and the choices recommended by HTNG should be: 1 - Customer

Element   @Attribute	Num	Description/Contents
		4 - Company 5 -Travel Agency *Refer to OpenTravel Code List Unique ID Type (UIT).
@ID	1	A unique identifying value assigned by the creating system. The ID attribute may be used to reference a primary-key value within a database or in a particular implementation.
HTNG_HotelCommissionPaymentRQ \ CommissionRecipients \ CommissionRecipient \ Profile	1	Root element for profile content.
@ProfileType	1	Code to specify a profile such as Customer, Tour Operator, Corporation, etc. Refer to OTA Code List Profile Type (PRT).
HTNG_HotelCommissionPaymentRQ \ CommissionRecipients \ CommissionRecipient \ Profile \ CompanyInfo	1	Company information related to the profile.
HTNG_HotelCommissionPaymentRQ \ CommissionRecipients \ CommissionRecipient \ Profile \ CompanyInfo \ CompanyName	1	Identifies the name of the company.
@CompanyShortName	0..1	Used to provide the company common name.
@Code	0..1	Identifies a company by the company code.
HTNG_HotelCommissionPaymentRQ \ CommissionRecipients \ CommissionRecipient \ Profile \ CompanyInfo \ AddressInfo	0..1	Detailed information on an address for the company.
@DefaultInd	0..1	When true, indicates this value should be used as the default.
HTNG_HotelCommissionPaymentRQ \ CommissionRecipients \ CommissionRecipient \ Profile \ CompanyInfo \ AddressInfo \ AddressLine	1..5	These lines will contain free form address details, including the street number and street name.
HTNG_HotelCommissionPaymentRQ \ CommissionRecipients \ CommissionRecipient \ Profile \ CompanyInfo \ AddressInfo \ CityName	1	City (e.g., Dublin), town, or postal station (i.e., a postal service territory, often used in a military address).

Element   @Attribute	Num	Description/Contents
HTNG_HotelCommissionPaymentRQ \ CommissionRecipients \ CommissionRecipient \ Profile \ CompanyInfo \ AddressInfo \ PostalCode	1	Post Office Code number.
HTNG_HotelCommissionPaymentRQ \ CommissionRecipients \ CommissionRecipient \ Profile \ CompanyInfo \ AddressInfo \ StateProv	1	State or Province name (e.g., Texas).
@StateCode	0..1	The standard code or abbreviation for the state, province, or region (e.g., VT).
HTNG_HotelCommissionPaymentRQ \ CommissionRecipients \ CommissionRecipient \ Profile \ CompanyInfo \ AddressInfo \ CountryName	1	The name or code of a country (e.g., as used in an address or to specify citizenship of a traveler).
@Code	0..1	ISO 3166 code for a country.
HTNG_HotelCommissionPaymentRQ \ CommissionRecipients \ CommissionRecipient \ Profile \ CompanyInfo \ TelephoneInfo	1	Information on a telephone number for the company.
@PhoneTechType	0..1	The PhoneTechType attribute refers to the OTA PTT code list and indicates which type of number is transmitted (phone versus fax). The codes to be used by HTNG are: Code 1 -Voice Code 3 -Fax Code 5- Mobile
@PhoneNumber	1	Telephone number assigned to a single location.
@DefaultInd	0..1	When true, indicates this value should be used as the default.
@Remark	0..1	
HTNG_HotelCommissionPaymentRQ \ CommissionRecipients \ CommissionRecipient \ Profile \ CompanyInfo \ URL	0..1	Web site address of the company in IETF specified format.
HTNG_HotelCommissionPaymentRQ \ CommissionRecipients \	1	Information on a contact person for a company.

Element   @Attribute	Num	Description/Contents
CommissionRecipient \ Profile \ CompanyInfo \ ContactPerson		
@DefaultInd	0..1	When true, indicates this value should be used as the default.
HTNG_HotelCommissionPaymentRQ \ CommissionRecipients \ CommissionRecipient \ Profile \ CompanyInfo \ ContactPerson \ PersonName	1	Detailed name information.
HTNG_HotelCommissionPaymentRQ \ CommissionRecipients \ CommissionRecipient \ Profile \ CompanyInfo \ ContactPerson \ PersonName \ GivenName	1	Given name, first name or names.
HTNG_HotelCommissionPaymentRQ \ CommissionRecipients \ CommissionRecipient \ Profile \ CompanyInfo \ ContactPerson \ PersonName \ MiddleName	0..1	The middle name of the person name.
HTNG_HotelCommissionPaymentRQ \ CommissionRecipients \ CommissionRecipient \ Profile \ CompanyInfo \ ContactPerson \ PersonName \ Surname	1	Family name, last name.
HTNG_HotelCommissionPaymentRQ \ CommissionRecipients \ CommissionRecipient \ Profile \ CompanyInfo \ ContactPerson \ Email	0..1	Information on an email address.
@DefaultInd	0..1	When true, indicates this value should be used as the default.
@Remark	0..1	
HTNG_HotelCommissionPaymentRQ \ CommissionRecipients \ CommissionRecipient \ Profile \ TPA_Extensions	0..1	Could be used to pass additional Profile data upon agreement between partners (specific Keys or codes for instance).
HTNG_HotelCommissionPaymentRQ \ CommissionRecipients \ CommissionRecipient \ CommissionableReservations	1	A collection of reservations that are potentially commissionable.

Element   @Attribute	Num	Description/Contents
HTNG_HotelCommissionPaymentRQ \ CommissionRecipients \ CommissionRecipient \ CommissionableReservations \ CommissionableReservation	1..n	The Reservation class contains a reservation for which a commission has been calculated.
@CreateDateTime	0..1	Time stamp of the creation of this reservation.
@ResStatus	0..1	The status of the reservation. Should be "Checked out".
HTNG_HotelCommissionPaymentRQ \ CommissionRecipients \ CommissionRecipient \ CommissionableReservations \ CommissionableReservation \ UniqueID	1	The booking reference for the reservation.
@Type	1	A reference to the type of object defined by the UniqueID element. Refer to OTA Code List Unique ID Type (UIT).
@ID	1	A unique identifying value assigned by the creating system. The ID attribute may be used to reference a primary-key value within a database or in a particular implementation.
HTNG_HotelCommissionPaymentRQ \ CommissionRecipients \ CommissionRecipient \ CommissionableReservations \ CommissionableReservation \ RoomStays	1	Collection of room stays.
HTNG_HotelCommissionPaymentRQ \ CommissionRecipients \ CommissionRecipient \ CommissionableReservations \ CommissionableReservation \ RoomStays \ RoomStay	1..n	Details on the Room Stay including Guest Counts, Time Span of this Room Stay, pointers to Res Guests, guest Memberships, Comments and Special Requests pertaining to this particular Room Stay and finally financial information related to the Room Stay, including Guarantee, Deposit and Payment and Cancellation Penalties.
@SourceOfBusiness	0..1	To specify where the business came from e.g. radio, newspaper ad, etc.
HTNG_HotelCommissionPaymentRQ \ CommissionRecipients \ CommissionRecipient \ CommissionableReservations \	1	A collection of RoomRate objects.

Element   @Attribute	Num	Description/Contents
CommissionableReservation \ RoomStays \ RoomStay \ RoomRates		
HTNG_HotelCommissionPaymentRQ \ CommissionRecipients \ CommissionRecipient \ CommissionableReservations \ CommissionableReservation \ RoomStays \ RoomStay \ RoomRates \ RoomRate	1..n	One instance of RoomRate per room/rate booked. If multiple room types can be booked, then the element "RoomRate" must be repeated for each room type booked in the reservation. If more than one Rate plan can be booked in one reservation the entire RoomRate element must be repeated for each Room / rate combination.
@RatePlanCode	1	A string value may be used to request a particular code or an ID if the guest qualifies for a specific rate, such as AARP, AAA, a corporate rate, etc., or to specify a negotiated code as a result of a negotiated rate.
@RoomTypeCode	1	Specific system room type code, i.e., A1K, A1Q, etc.
@RoomID	1	A string value representing the unique identification of a specific room.
@NumberOfUnits	1	The number of rooms.
@InvBlockCode	0..1	If the room booked is part of a block the block code or suitable default string agreed by the implementing partners should be transferred in this field.
HTNG_HotelCommissionPaymentRQ \ CommissionRecipients \ CommissionRecipient \ CommissionableReservations \ CommissionableReservation \ RoomStays \ RoomStay \ GuestCounts	1	A collection of GuestCount by age group.
HTNG_HotelCommissionPaymentRQ \ CommissionRecipients \ CommissionRecipient \ CommissionableReservations \ CommissionableReservation \ RoomStays \ RoomStay \ GuestCounts \ GuestCount	1..n	A recurring element that identifies the number of guests and ages of the guests.
@AgeQualifyingCode	1	A code representing a business rule that determines the charges for a guest based upon age range (e.g., Adult, Child, Senior, Child With Adult, Child Without Adult). This attribute allows for an increase in rate by occupant

Element   @Attribute	Num	Description/Contents
		class. Refer to OpenTravel Code List Age Qualifying Code (AQC).
@Count	1	The number of guests in one AgeQualifyingCode or Count.
HTNG_HotelCommissionPaymentRQ \ CommissionRecipients \ CommissionRecipient \ CommissionableReservations \ CommissionableReservation \ RoomStays \ RoomStay \ TimeSpan	1	The attributes of the OTA DateTimeSpan data type are based on the W3C base data types of timeInstant and timeDuration. The lexical representation for timeDuration is the [ISO 8601] extended format PnYnMnDTnH nMnS, where nY represents the number of years, nM the number of months, nD the number of days, 'T' is the date/time separator, nH the number of hours, nM the number of minutes and nS the number of seconds. The number of seconds can include decimal digits to arbitrary precision. As an example, 7 months, 2 days, 2hours and 30 minutes would be expressed as P0Y7M2DT2H30M0S. Truncated representations are allowed provided they conform to ISO 8601 format. Time periods, i.e., specific durations of time, can be represented by supplying two items of information: a start instant and a duration or a start instant and an end instant or an end instant and a duration. The OTA standards use the XML mapping that provides for two elements to represent the specific period of time; a start Instant and a duration.
@Start	1	The starting value of the time span, for instance and arrival date.
@End	1	The ending value of the time span, for instance a departure date.
HTNG_HotelCommissionPaymentRQ \ CommissionRecipients \ CommissionRecipient \ CommissionableReservations \ CommissionableReservation \ RoomStays \ RoomStay \ BasicPropertyInfo	0..1	An abbreviated short summary of hotel descriptive information.
@HotelCode	0..1	The code that uniquely identifies a single hotel property. The hotel code is decided between vendors.
@HotelName	1	A text field used to communicate the proper name of the hotel.
@ChainCode	0..1	The code that identifies a hotel chain or management

Element   @Attribute	Num	Description/Contents
		group. The hotel chain code is decided between vendors. This attribute is optional if the hotel is an independent property that can be identified by the HotelCode attribute.
@ChainName	0..1	The name of the hotel chain (e.g., Hilton, Marriott, Hyatt, Starwood).
@BrandCode	0..1	A code that identifies the brand or flag of a hotel, often used for independently-owned or franchised properties who are known by a specific brand.
@BrandName	0..1	The name of a brand of hotels (e.g., Courtyard, Hampton Inn).
HTNG_HotelCommissionPaymentRQ \ CommissionRecipients \ CommissionRecipient \ CommissionableReservations \ CommissionableReservation \ ResGuests	1	A collection of ResGuest objects.
HTNG_HotelCommissionPaymentRQ \ CommissionRecipients \ CommissionRecipient \ CommissionableReservations \ CommissionableReservation \ ResGuests \ ResGuest	1..n	The ResGuest object contains the information about a guest associated with a reservation.
HTNG_HotelCommissionPaymentRQ \ CommissionRecipients \ CommissionRecipient \ CommissionableReservations \ CommissionableReservation \ ResGuests \ ResGuest \ Profiles	1	A collection of ProfileInfo objects.
HTNG_HotelCommissionPaymentRQ \ CommissionRecipients \ CommissionRecipient \ CommissionableReservations \ CommissionableReservation \ ResGuests \ ResGuest \ Profiles \ ProfileInfo	1..n	Root element for profile content.
HTNG_HotelCommissionPaymentRQ \ CommissionRecipients \ CommissionRecipient \ CommissionableReservations \	1	An identifier used to uniquely reference an object in a system (e.g., an airline reservation reference, customer profile reference, booking confirmation number, or a reference to a previous availability quote).

Element   @Attribute	Num	Description/Contents
CommissionableReservation \ ResGuests \ ResGuest \ Profiles \ ProfileInfo \ UniqueID		
@Type	1	A reference to the type of object defined by the UniqueID element. Refer to OTA Code List Unique ID Type (UIT).
@ID	1	A reference to the type of object defined by the UniqueID element. Refer to OpenTravel Code List Unique ID Type (UIT).
HTNG_HotelCommissionPaymentRQ \ CommissionRecipients \ CommissionRecipient \ CommissionableReservations \ CommissionableReservation \ ResGuests \ ResGuest \ Profiles \ ProfileInfo \ Profile	1	Root element for profile content.
@ProfileType	1	Code to specify a profile such as Customer, Tour Operator, Corporation, etc. Refer to OTA Code List Profile Type (PRT).
HTNG_HotelCommissionPaymentRQ \ CommissionRecipients \ CommissionRecipient \ CommissionableReservations \ CommissionableReservation \ ResGuests \ ResGuest \ Profiles \ ProfileInfo \ Profile \ Customer	1	Detailed customer information for this profile.
HTNG_HotelCommissionPaymentRQ \ CommissionRecipients \ CommissionRecipient \ CommissionableReservations \ CommissionableReservation \ ResGuests \ ResGuest \ Profiles \ ProfileInfo \ Profile \ Customer \ PersonName	1	Detailed name information.
HTNG_HotelCommissionPaymentRQ \ CommissionRecipients \ CommissionRecipient \ CommissionableReservations \ CommissionableReservation \	1	Given name, first name or names.

Element   @Attribute	Num	Description/Contents
ResGuests \ ResGuest \ Profiles \ ProfileInfo \ Profile \ Customer \ PersonName \ GivenName		
HTNG_HotelCommissionPaymentRQ \ CommissionRecipients \ CommissionRecipient \ CommissionableReservations \ CommissionableReservation \ ResGuests \ ResGuest \ Profiles \ ProfileInfo \ Profile \ Customer \ PersonName \ MiddleName	0..1	The middle name of the person name.
HTNG_HotelCommissionPaymentRQ \ CommissionRecipients \ CommissionRecipient \ CommissionableReservations \ CommissionableReservation \ ResGuests \ ResGuest \ Profiles \ ProfileInfo \ Profile \ Customer \ PersonName \ Surname	1	Family name, last name.
HTNG_HotelCommissionPaymentRQ \ CommissionRecipients \ CommissionRecipient \ CommissionableReservations \ CommissionableReservation \ ResGuests \ ResGuest \ Profiles \ ProfileInfo \ Profile \ Customer \ CustLoyalty	0..1	Program rewarding frequent use by accumulating credits for services provided by vendors.
@MembershipID	1	Unique identifier of the member in the program (membership number, account number, etc.).
@VendorCode	0..1	Indicate the partner(s)/vendor(s) for which the customer loyalty number is valid.
@ProgramID	1	Identifier to indicate the company owner of the loyalty program.
@Remark	0..1	A remark associated with the customer's loyalty program.
HTNG_HotelCommissionPaymentRQ \ CommissionRecipients \	1	Contains details pertaining to a commission.

Element   @Attribute	Num	Description/Contents
CommissionRecipient \ CommissionableReservations \ CommissionableReservation \ CommissionInfo		
@StatusType	1	Indicates the status of the commission payment itself (e.g. no-show indicates that a different commission may be applied if the reservation is not fulfilled).
@ReasonCode	0..1	Identifies the reason why a commission is not paid or not paid in full.
@Percent	1	The percent applied to the commissionable amount to determine the commission payable amount.
@CurrencyCode	0..1	The code specifying a monetary unit. Use ISO 4217, three alpha code.
@DecimalPlaces	0..1	Indicates the number of decimal places for a particular currency. This is equivalent to the ISO 4217 standard "minor unit". Typically used when the amount provided includes the minor unit of currency without a decimal point (e.g., USD 8500 needs DecimalPlaces="2" to represent \$85).
HTNG_HotelCommissionPaymentRQ \ CommissionRecipients \ CommissionRecipient \ CommissionableReservations \ CommissionableReservation \ CommissionInfo \ CommissionableAmount	1	The amount on which commission is calculated.
@Amount	1	A monetary amount.
HTNG_HotelCommissionPaymentRQ \ CommissionRecipients \ CommissionRecipient \ CommissionableReservations \ CommissionableReservation \ CommissionInfo \ CommissionPayableAmount	1	The amount of commission to be paid.
@Amount	1	A monetary amount
HTNG_HotelCommissionPaymentRQ \ CommissionRecipients \ CommissionableReservations \	0..1	Text related to the commission.

Element   @Attribute	Num	Description/Contents
CommissionableReservation \ CommissionInfo \ Comment		
HTNG_HotelCommissionPaymentRQ \ CommissionRecipients \ CommissionRecipient \ CommissionableReservations \ CommissionableReservation \ CommissionInfo \ Comment \ Text	1	Formatted text content.
HTNG_HotelCommissionPaymentRQ \ CommissionRecipients \ CommissionRecipient \ TotalCommission	1	Contains details pertaining to the total commission.
@StatusType	1	Indicates the status of the commission payment itself (e.g. no-show indicates that a different commission may be applied if the reservation is not fulfilled).
@ReasonCode	0..1	Identifies the reason why a commission is not paid or not paid in full.
@CurrencyCode	0..1	The code specifying a monetary unit. Use ISO 4217, three alpha code.
@DecimalPlaces	0..1	Indicates the number of decimal places for a particular currency. This is equivalent to the ISO 4217 standard "minor unit". Typically used when the amount provided includes the minor unit of currency without a decimal point (e.g., USD 8500 needs DecimalPlaces="2" to represent \$85).
HTNG_HotelCommissionPaymentRQ \ CommissionRecipients \ CommissionRecipient \ TotalCommission \ CommissionableAmount	1	The amount on which commission is calculated.
@Amount	1	A monetary amount.
HTNG_HotelCommissionPaymentRQ \ CommissionRecipients \ CommissionRecipient \ TotalCommission \ CommissionPayableAmount	1	The amount of commission to be paid.
@Amount	1	A monetary amount.
HTNG_HotelCommissionPayment	0..1	Text related to the commission.

Element   @Attribute	Num	Description/Contents
tRQ \ CommissionRecipients \ CommissionRecipient \ TotalCommission \ Comment		
HTNG_HotelCommissionPaymentRQ \ CommissionRecipients \ CommissionRecipient \ TotalCommission \ Comment \ Text	1	Formatted text content.

### 3.1.6 Sample Message - Request

```
<?xml version="1.0" encoding="UTF-8"?>
<HTNG_HotelCommissionPaymentRQ EchoToken="a" CorrelationID="a" TimeStamp="2001-12-17T09:30:47Z" Version="0.0" Target="Test"
xmlns="http://www.opentravel.org/OTA/2003/05"
xmlns:xsi="http://www.w3.org/2001/XMLSchema-instance">
  <CommissionRecipients>
    <CommissionRecipient>
      <UniqueID Type="4" ID="Vendor Code"/>
      <Profile ProfileType="17">
        <CompanyInfo>
          <CompanyName CompanyShortName="DBA" Code="Vendor
Code">Vendor Full Name</CompanyName>
          <AddressInfo DefaultInd="true">
            <AddressLine>Vendor Address1</AddressLine>
            <AddressLine>Vendor Address2</AddressLine>
            <CityName>Vendor City</CityName>
            <PostalCode>Vendor Postal Code</PostalCode>
            <StateProv StateCode="aa">Vendor
State</StateProv>
            <CountryName Code="AA">Vendor
Country</CountryName>
          </AddressInfo>
          <TelephoneInfo PhoneTechType="1"
PhoneNumber="Vendor Phone Number" DefaultInd="true" Remark="a"/>
          <TelephoneInfo PhoneTechType="3"
PhoneNumber="Vendor Fax Number" DefaultInd="true" Remark="a"/>
          <URL>Vendor website</URL>
          <ContactPerson DefaultInd="true">
            <PersonName>
              <GivenName>Vendor Contact</GivenName>
              <MiddleName>Vendor
Contact</MiddleName>
              <Surname>Vendor Contact</Surname>
            </PersonName>
            <Email DefaultInd="true" Remark="a">Vendor
Email Address</Email>
          </ContactPerson>
        </CompanyInfo>
        <TPA_Extensions/>
      </Profile>
      <CommissionableReservations>
        <CommissionableReservation CreateDateTime="Booking Date"
ResStatus="Checked out">
          <UniqueID Type="14" ID="Confirmation Number"/>
          <RoomStays>
            <RoomStay SourceOfBusiness="Source Code">
              <RoomRates>
```

```
Code" RoomTypeCode="Room Type" RoomID="Room#" NumberOfUnits="Number of Rooms"
InvBlockCode="Group Code"/>
    </RoomRates>
    <GuestCounts>
        <GuestCount
AgeQualifyingCode="10" Count="Number of Adults"/>
        <GuestCount
AgeQualifyingCode="8" Count="Number of Children"/>
    </GuestCounts>
    <TimeSpan End="Departure Date"
Start="Arrival Date"/>
    <BasicPropertyInfo
ChainCode="HotelChainCode" HotelName="a" ChainName="a" BrandCode="a"
HotelCode="Property ID" BrandName="a">
    </BasicPropertyInfo>
</RoomStay>
</RoomStays>
<ResGuests>
    <ResGuest>
        <Profiles>
            <ProfileInfo>
                <UniqueID Type="31"
ID="a"/>
                <Profile ProfileType="1">
                    <Customer>
                        <PersonName>
                            <GivenName>Guest Name</GivenName>
                            <MiddleName>Guest Name</MiddleName>
                            <Surname>Guest Name</Surname>
                        </PersonName>
                    </Customer>
                </ProfileInfo>
            </Profiles>
        </ResGuest>
    </ResGuests>
    <CommissionInfo StatusType="Full" ReasonCode="a"
Percent="Commission Percentage Rate" CurrencyCode="AAA" DecimalPlaces="1">
        <CommissionableAmount Amount="Total
Commissionable Revenue"/>
        <CommissionPayableAmount Amount="Commission
Due (Net Amount)"/>
        <Comment>
            <Text>String</Text>
        </Comment>
    </CommissionInfo>
</CommissionableReservation>
<CommissionableReservation>
    <!-- Reservation #2-->
</CommissionableReservation>
<CommissionableReservation>
    <!-- Reservation #3-->
</CommissionableReservation>
</CommissionableReservations>
<TotalCommission StatusType="Full" ReasonCode="a"
CurrencyCode="AAA" DecimalPlaces="1">
    <CommissionableAmount Amount="Total Commissionable
Revenue"/>
```

```

Amount)"/>
        <CommissionPayableAmount Amount="Commission Due (Net
        <Comment>
            <Text>String</Text>
        </Comment>
    </TotalCommission>
</CommissionRecipient (ProfileInfo)>
<CommissionRecipient (ProfileInfo)>
    <!-- Travel Agent #2-->
</CommissionRecipient (ProfileInfo)>
</CommissionRecipients>
</HTNG_HotelCommissionPaymentRQ>
    
```

**3.1.7 Data Element Table - Response**

Element   @Attribute	Num	Description/Contents
HTNG_HotelCommissionPayment RS	1	Root element of the response message.
@EchoToken	1	A reference for additional message identification, assigned by the requesting host system. When a request message includes an echo token the corresponding response message MUST include an echo token with an identical value.
@CorrelationID	0..1	Allow end-to-end correlation of log messages with the corresponding Web service message throughout the processing of the Web service message.
@TimeStamp	1	Indicates the creation date and time of the message in UTC using the following format specified by ISO 8601; YYYY-MM-DDThh:mm:ssZ with time values using the 24-hour clock (e.g., 20 November 2003, 1:59:38 pm UTC becomes 2003-11-20T13:59:38Z).
@Version	1	For all OpenTravel versioned messages, the version of the message is indicated by a decimal value.
@Target	0..1	Used to indicate whether the request is for the Test or Production system.
HTNG_HotelCommissionPayment RS / Success	0..1	The presence of the empty Success element explicitly indicates that the OpenTravel versioned message succeeded.
HTNG_HotelCommissionPayment RS \Warnings	0..1	Used in conjunction with the Success element to define one or more business errors.
HTNG_HotelCommissionPayment RS \Warnings \ Warning	1..n	Used when a message has been successfully processed to report any warnings or business errors that occurred.
@Type	1	The Warning element MUST contain the Type attribute that uses a recommended set of values to indicate the warning type. The validating XSD can expect to accept values that it has NOT been explicitly coded for and

Element   @Attribute	Num	Description/Contents
		process them by using Type ="Unknown". Refer to OpenTravel Code List Error Warning Type (EWT).
@Status	0..1	If present, recommended values are those enumerated in the OTA_ErrorRS, (NotProcessed   Incomplete   Complete   Unknown) however, the data type is designated as string data, recognizing that trading partners may identify additional status conditions not included in the enumeration.
@ShortText	1	An abbreviated version of the error in textual format.
@Code	0..1	If present, this refers to a table of coded values exchanged between applications to identify errors or warnings. Refer to OpenTravel Code List Error Codes (ERR).

**3.1.8 Sample Message - Response**

```
<?xml version="1.0" encoding="UTF-8"?>
<HTNG_HotelCommissionPaymentRS EchoToken="a" CorrelationID="a" Timestamp="2001-
12-17T09:30:47Z" Version="0.0" Target="Test">
  <Success/>
  <Warnings>
    <ota:Warning Type="0" Status="a" ShortText="a"
Code="0">String</ota:Warning>
  </Warnings>
</HTNG_HotelCommissionPaymentRS>
```

## 4 Appendices

### 4.1 Glossary of Terms

For the purpose of this document the following terms have been defined as follows:

Term	Definition
Commission Calculation Server	A system that transacts the guest check-in/check-out and calculates payment amount due to the travel agent.
Commission Payment Server	Typically a back office financial management system or other payment processor that would ultimately execute the payable and is responsible for processing the message and handling of payment to the travel agent.
IATA number	International Air Transport Association number

### 4.2 Implementation Notes

### 4.3 Links

### 4.4 Referenced Documents

The following table shows the documents upon which this document depends:

Document Title	Location/URL
OpenTravel Alliance 2011A	<a href="http://opentravel.org/Specifications/Default.aspx">http://opentravel.org/Specifications/Default.aspx</a>